

The Michigan Center for Rural Health & the Michigan Arthritis Collaborative Partnership present:  
**ARTHRITIS GRAND ROUNDS**

*via the REMEC TeleHealth Network*

*This conference is organized in conjunction with the St. Mary Mercy Hospital-Livonia.*

**Topic:** Hematologic Complications of RA

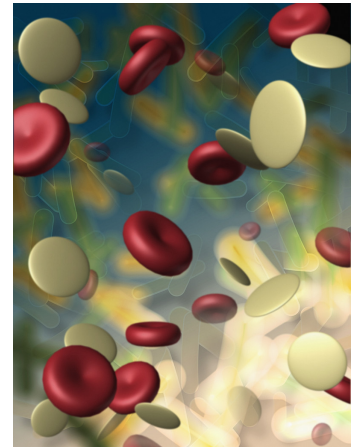
**Speaker:** Wendy Marder, MD

**Date:** Wednesday, April 11, 2007

**Time:** 12:00 Noon - 1:00 PM

**Audience:** General Medical Staff

**Objectives:** 1. Lymphomas in RA and reasons for their increased incidence in RA patients. 2. Felty's syndrome and related platelets abnormalities in RA. 3. Other hematologic problems related to medication for RA.



**Accreditation – Designation Statements:**

AMA: St. Mary Mercy Hospital is accredited by the Michigan State Medical Society Committee on CME Accreditation to provide continuing medical education for physicians. ST. Mary Mercy Hospital designates these educational activities for a maximum of 1 “AMA PRA Category 1 Credit <sup>TM</sup>” each. Physicians should claim credit commensurate with the extent of their participation in the activity.

**Faculty Disclosures will be made prior to the start of these CME Activities**

**CONTACT MCRH @ 517-355-8250 or visit**

**[www.com.msu.edu/micrh](http://www.com.msu.edu/micrh)**

***For Program Information and Learner Objectives***

**Sign-in sheets, program evaluations & any available handouts will be posted 2-3 days prior to the program at the above website.**

***Contact your Site Coordinator to confirm this broadcast at your facility.***

**Site Location:** \_\_\_\_\_

**Site Contact & Phone:** \_\_\_\_\_